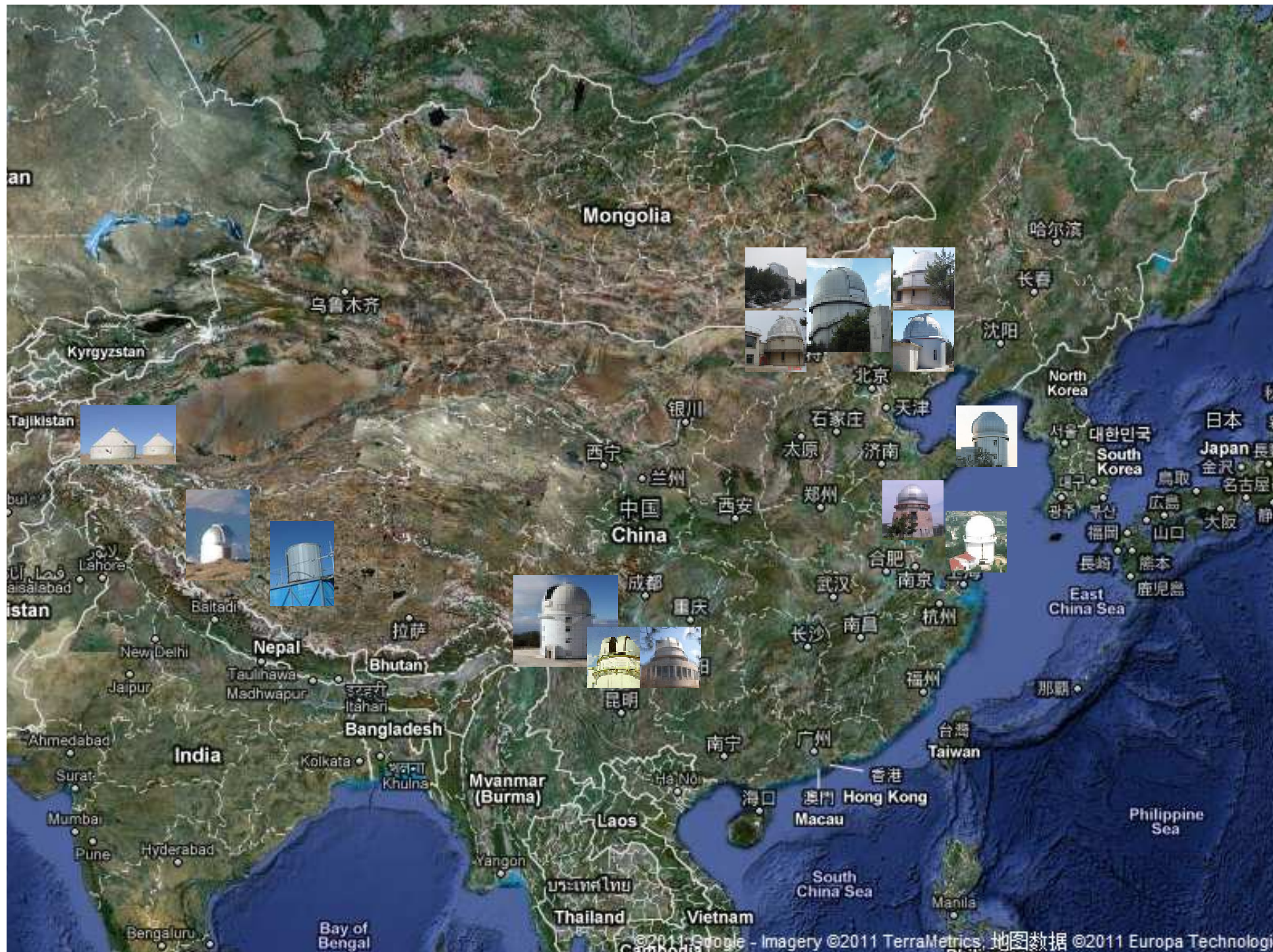


The Chinese Optical Telescopes

ZHOU, Xu

Chinese National Astronomical
Observatories

KIAA 2011.2.16



Mongolia

China

India

Nepal

Bangladesh

Myanmar (Burma)

Thailand

Vietnam

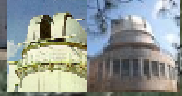
Taiwan

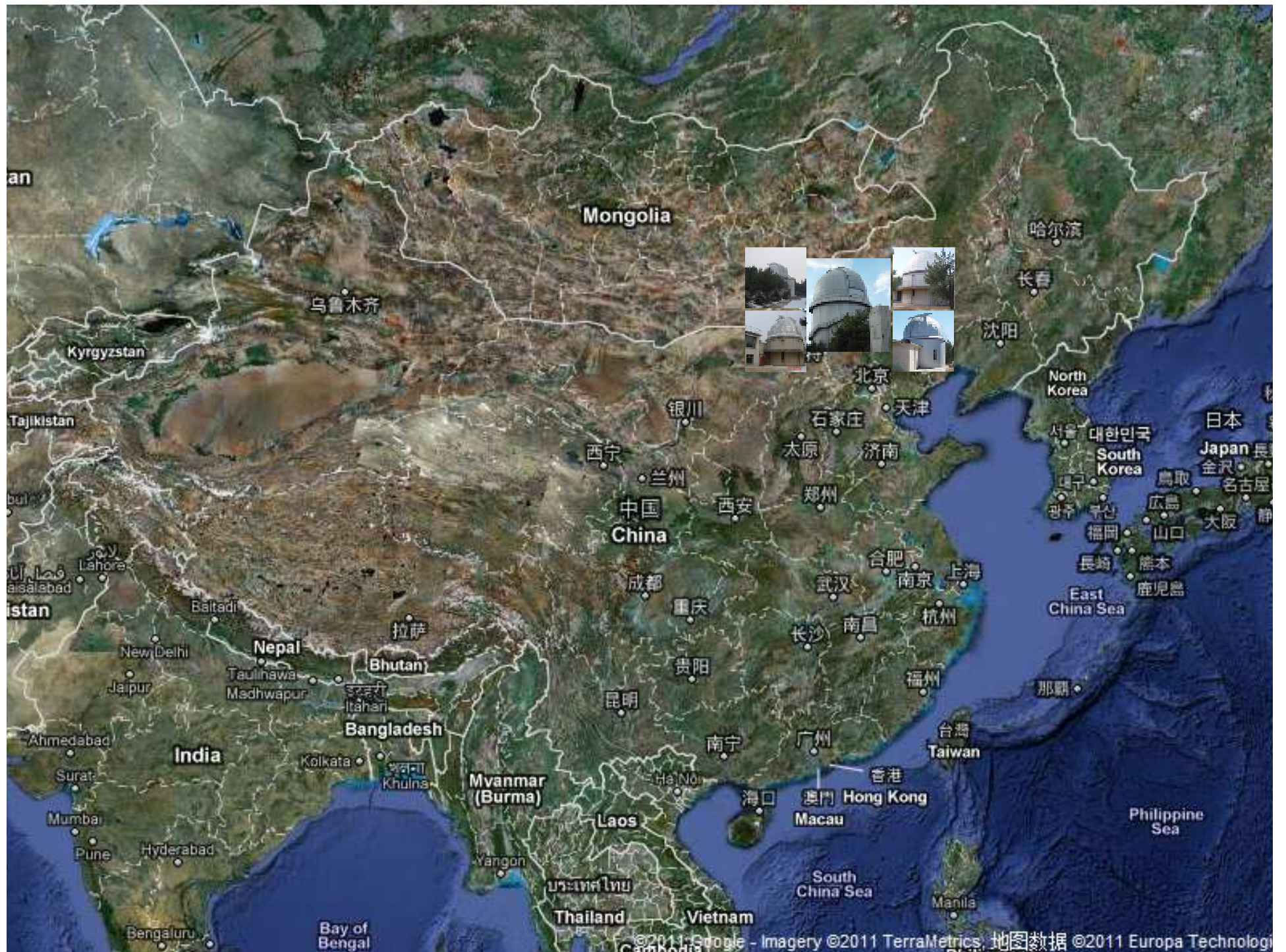
Philippine Sea

North Korea

South Korea

Japan







Xinglong Ststion of NAOC

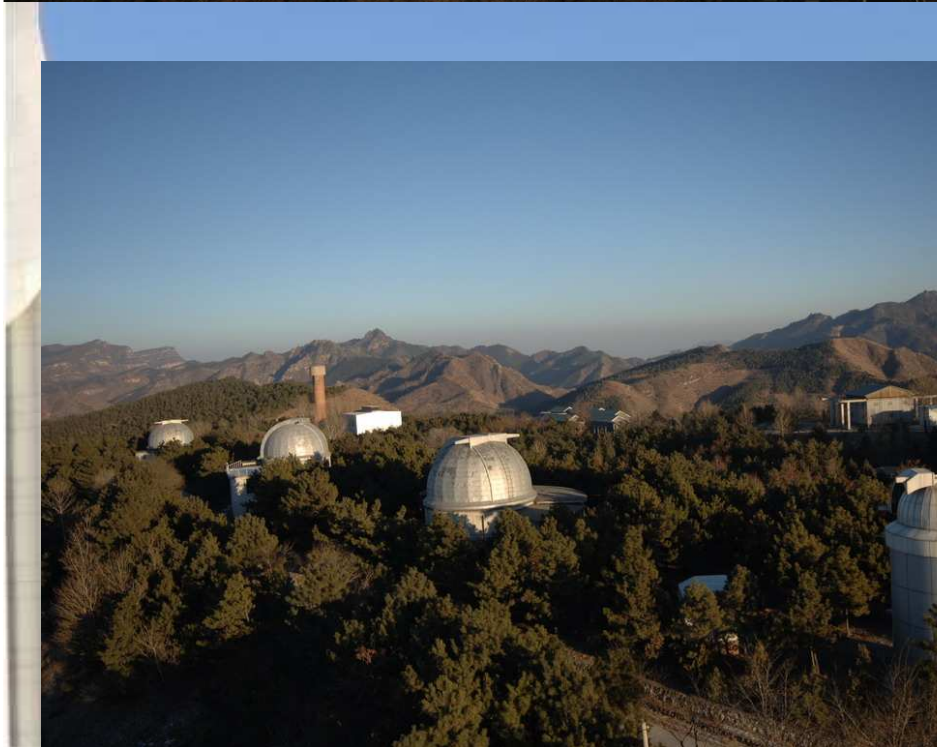
Altitude: □ 900m;

Distance from Beijing: 150km

Observable Nights: 200 days/Year;

Telescopes: 9





216CM Telescope



Aperture: 216cm

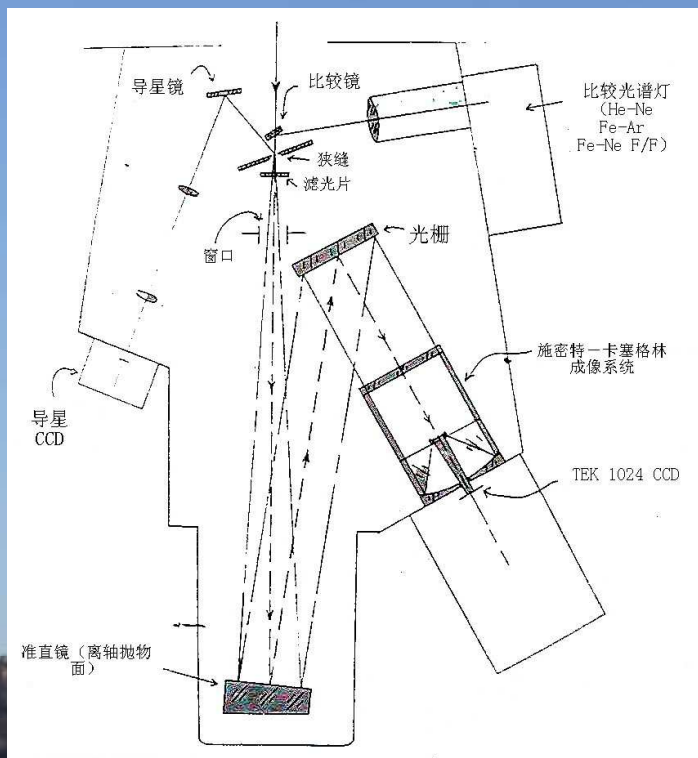
Cassegrai Focus $f/9$

Coude Focus: $f/45$



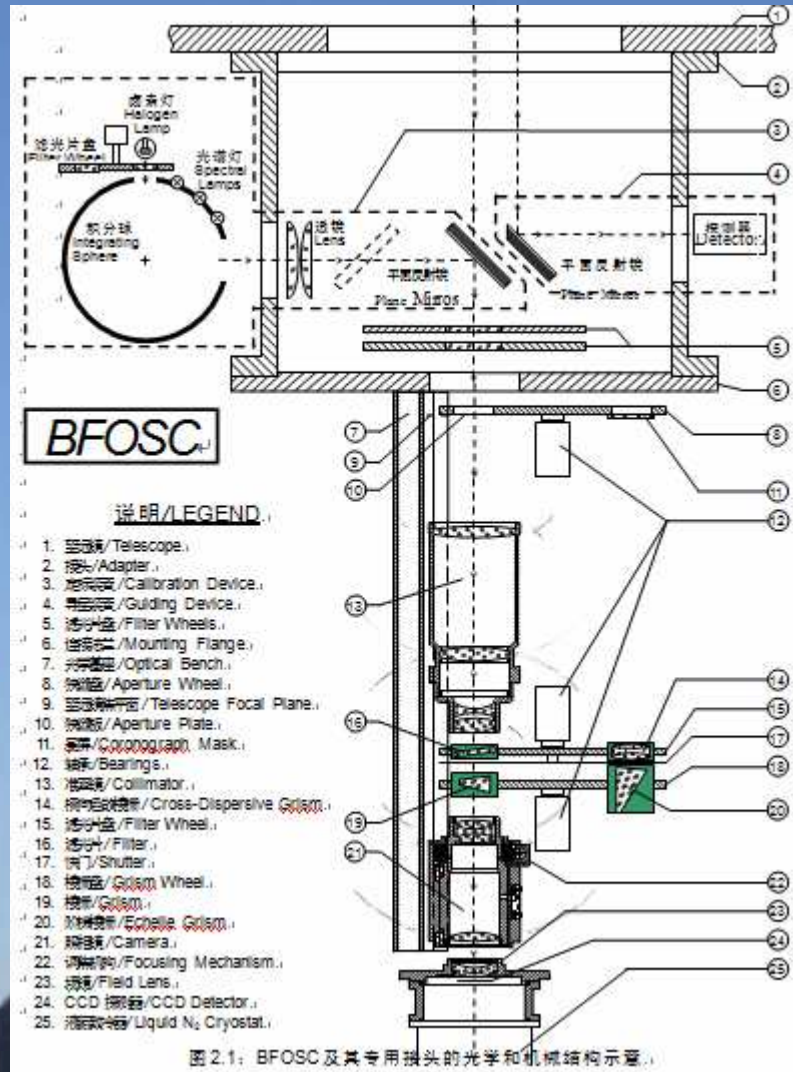
OMR spectroscopy

Line	Dispersion (Å/mm)	Resolution	1 st order(Å)	Blazing Angle (A)
150g/mm	400	9.6	5000	2.2
300g/mm(R)	200	4.8	8000	6.5
600g/mm	100	2.4	6500	11.3
1200g/mm(R)	50	1.2	8000	28.7
300g/mm(B)	200	4.8	5500	/
1200g/mm(B)	50	1.2	/	/



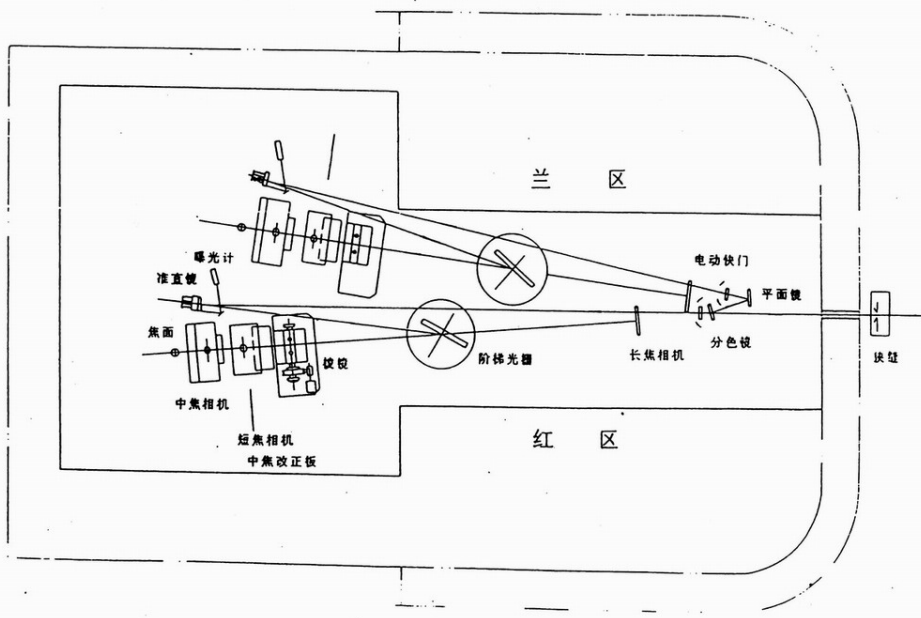
BFOSC

BAO FAINT OBJECT SPECTROGRAPH AND CAMERA



Coudé Echelle Spectrograph

The echelle image covers the spectral region from 330 to 1100 nm displayed in 80 spectral orders in one exposure through two light beams. With a slit height of 2 mm, spectral orders are separated by 15 to 23 pixels in blue region and by 7 to 19 pixels in red region with resolving power $R = 16\,000$, $170\,000$ in the blue beam and $R = 13\,000$, $170\,000$ in the red beam could be provided by this spectrograph. The limiting magnitude for 1 hour exposure with an S/N ratio of 100 scales to $V = 9.5$ in the red path and to $V = 7.2$ in the blue path.



BATC photometric system

Telescope: 60/90 cm f/3 Schmidt

CCD: E2V 4096x4096

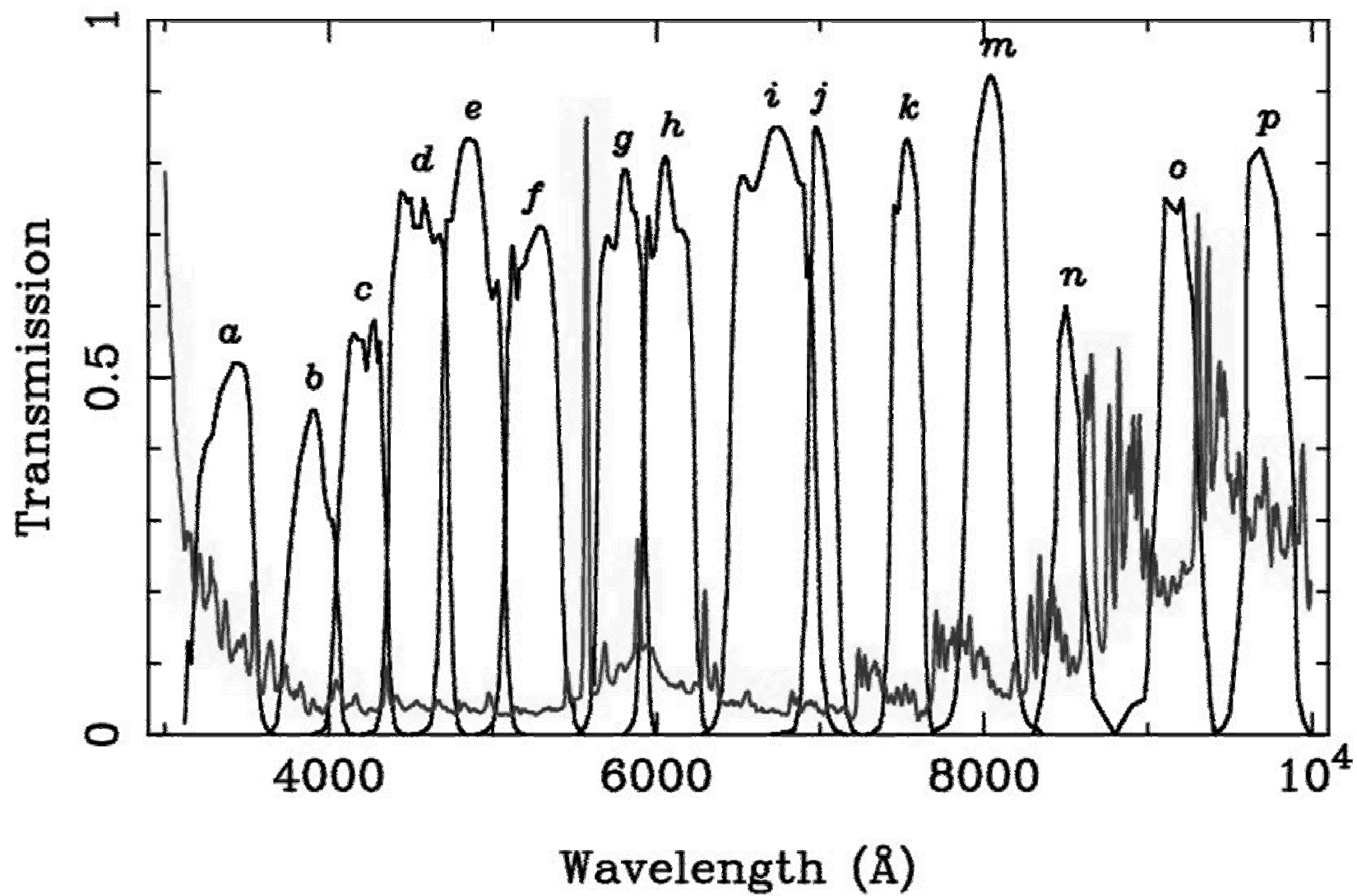
Blue sensitive 12um/pixel

Filters: 15 intermediate bands

The field of view: 94x94 arcmin²



KIAA 2011.2.16



SDSS filters (u, g, r, i, z)



KIAA 2011.2.16

Control

Row: 1272
Col: 815
Value: 2551

0 31255
937.65 3750.6

X-lations	Color Ctrl	Options
Linear	Other...	Inv...
Sqrt	Invert	Digitals...
Log	B & W	Show Label
	Contour	LWP Print
		LWP [Box]
		New Image..

clip
fine
lock

Schmidt 60/90cm & ... Controller Table

National Astronomical Observatory 60/90 Schmidt Telescope Observation Control Interface

Instrument

Quit

Local 2Kx2K

Elapsed: 0.00
Remaining: 0.00

Start Exposure Stop and read out Abort and throw away

Selection 0: smt

Exposure: 1 2 0 0 . 0 0

From Display	Whole CCD	nr	nc	sr	sc
		2048	2048	0	0

Shutter: Open Closed

Binning: 1 2 4

Gain: 0 1 2 3

Read Speed: Fast Medium Slow

Observation number: 132

Record Don't Record

Object (64 char max):
bias

0123	567890123456789012345
BIAS	00:00:00.0 00:00:00.0 2
FLAT	00:00:00.0 00:00:00.0 2
MP59	10:24:15.0 04:40:00.0
MP60	10:41:26.0 -19:11:36.0
MP61	11:03:50.0 43:35:00.0
MP62	11:38:02.0 -15:35:00.0
MP63	11:46:26.0 03:34:00.0
MP64	11:34:41.0 -08:56:00.0
MP65	14:29:55.0 -27:33:00.0
MP66	16:35:28.0 -10:30:00.0
MP67	16:00:36.0 43:36:00.0
MP68	23:05:36.0 -05:45:00.0
MP01	18:04:00.0 36:45:00.0
Mh01	22:32:01.21 -13:44:26.0

sky area: Display on PC

R.A.: S_time 31:39:42.4

Decl.: B_time 08:03:17.5

Epoch: R.A. 08:03:17.5

Object: Decl. +00:00:00.

EP_TIME: T_angle 00:00:00.0

Filter: Domefilt 0000_1

obs_number 132

SKY_AREA all

dome moving ad RA. filter disp Monitor

batfile
 clsbeep
 smtobs
 ABORT

KIAA 2011.2.16



KIAA 2011.2.16



THANKS!

KIAA 2011.2.16